

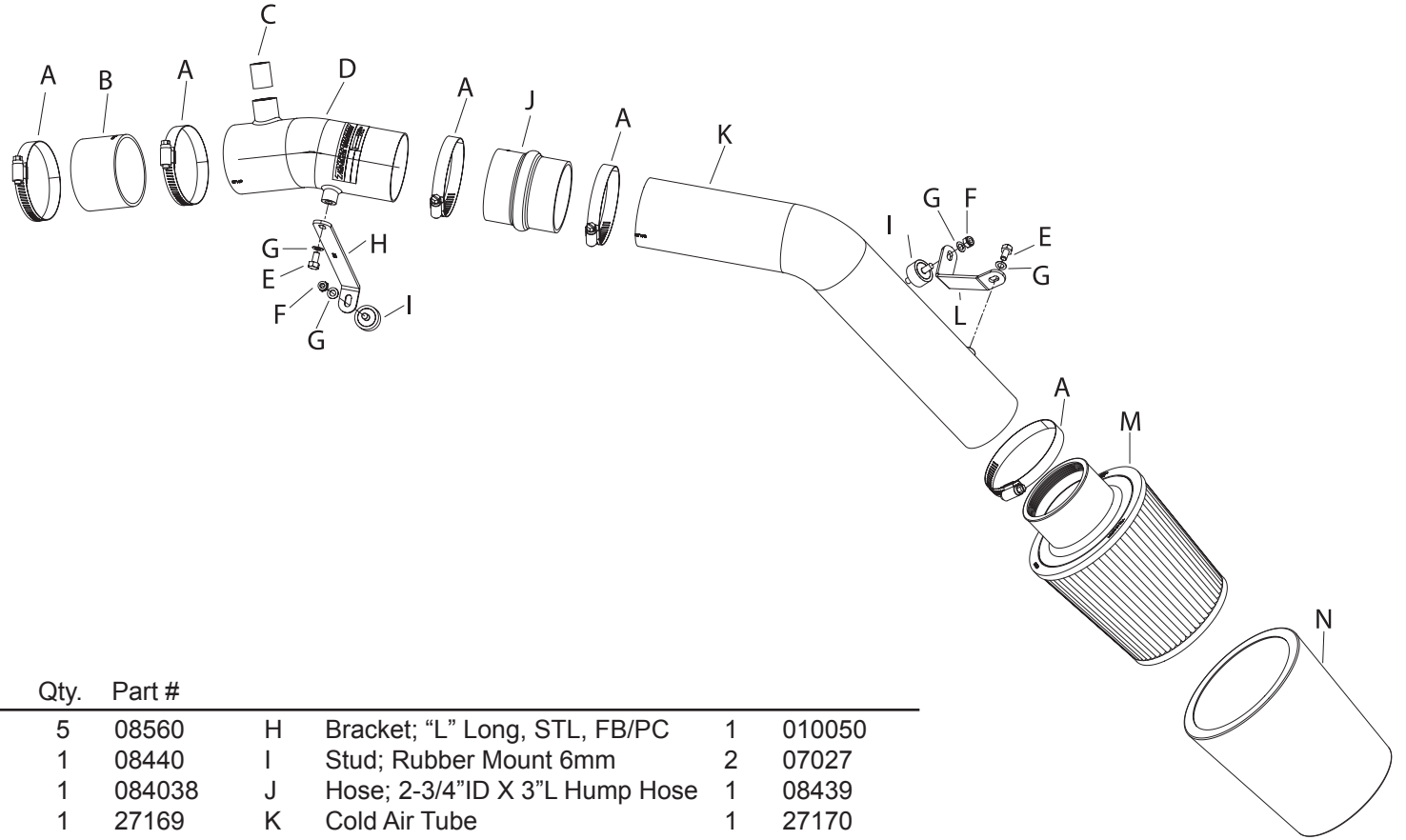


# TYPHOON INTAKE SYSTEMS

INTAKE SYSTEMS FOR VEHICLES LISTED ARE 50 STATE LEGAL. SEE KNFILTERS.COM FOR CARB STATUS ON EACH PART FOR A SPECIFIC VEHICLE.

## INSTALLATION INSTRUCTIONS

**69-0021TS**  
**69-0021TB**  
**ACURA**  
**2004-08 TL**  
**V6-3.2L**



### TOOLS NEEDED:

- 8" Extension
- 8mm Socket
- 10mm Socket
- Flat Blade Screwdriver
- Pliers
- Ratchet

### PARTS LIST:

Description	Qty.	Part #	Description	Qty.	Part #
A Hose Clamp #44, SS	5	08560	H Bracket; "L" Long, STL, FB/PC	1	010050
B Hose; 2-3/4"ID X 2"L	1	08440	I Stud; Rubber Mount 6mm	2	07027
C Hose; 1/2" X 1"L	1	084038	J Hose; 2-3/4"ID X 3"L Hump Hose	1	08439
D Intake Tube	1	27169	K Cold Air Tube	1	27170
E Bolt; M6 - 1.00 X 12mm, SS	2	07727	L Bracket; "L", STL, FB/PC	1	010049
F Nut; 6mm Nylock, SS	2	07512	M Air Filter	1	RU-4870
G Washer; 6mm Wave, SS	4	08277	N Drycharger®	1	RX-4730DK

**WARNING:** The K&N® Drycharger® included with this kit must be installed on the K&N® air filter when used with this K&N® cold air intake system. The K&N® cold air intake system a performance product that can be used safely during mild weather conditions. During harsh and inclement weather conditions, you must convert your cold air intake system to a short ram configuration, or return your vehicle to the stock OEM airbox and intake tract configuration. Failure to follow these instructions can void your warranty.

**NOTE: FAILURE TO FOLLOW INSTALLATION INSTRUCTIONS AND NOT USING THE PROVIDED HARDWARE MAY DAMAGE THE INTAKE TUBE, THROTTLE BODY AND ENGINE.**

### TO START:

1. Turn off the ignition and disconnect the negative battery cable.

**NOTE: Disconnecting the negative battery cable erases pre-programmed electronic memories. Write down all memory settings before disconnecting the negative battery cable. Some radios will require an anti-theft code to be entered after the battery is reconnected. The anti-theft code is typically supplied with your owner's manual. In the event your vehicles' anti-theft code cannot be recovered, contact an authorized dealership to obtain your vehicles anti-theft code.**



2. Pull firmly upwards to remove the battery cover, then, disconnect the negative battery cable.



3. Use a flat blade screwdriver to remove the air inlet cover, which is secured by two plastic rivets.



4. Depress the hose clamp and remove the crankcase vent hard line from the stock intake tube as shown.



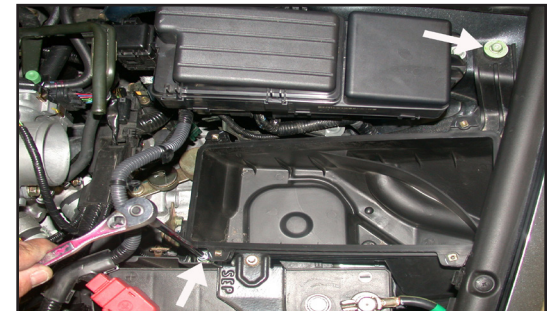
5. Unclip the wire harness from the stock intake tube as shown.



6. Loosen the hose clamp at the throttle body as shown.



7. Loosen the four bolts on the air cleaner cover and pull upwards, then, unclip the wire harness and remove the cover as shown.



8. Loosen and remove the two bolts that secure the lower air cleaner assembly as shown.



9. Depress the release tab and remove the wire harness from the bracket on the lower air cleaner assembly as shown.



10. Slide the lower air cleaner assembly off of the air inlet duct and remove the lower air cleaner assembly as shown.

**NOTE: K&N Engineering, Inc., recommends that customers do not discard factory air intake.**



11. Raise the vehicle up and support it with jack stands, then, remove the front tire as shown.



12. Remove the lower spoiler flap which is secured by two bolts as shown



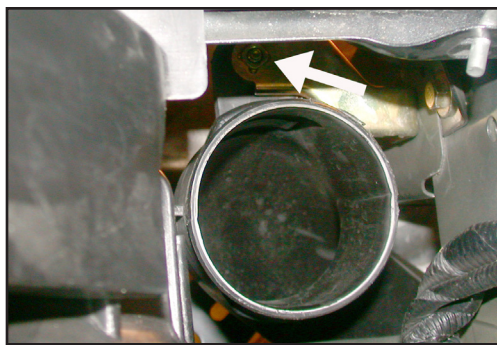
13. Remove one bolt and four plastic rivets, then, pull the inner wheel valance back and down as shown.



14. Remove rubber coupler from resonator tube assembly.



15. Remove the upper air inlet duct as shown.



16. Remove the bolt that secures the lower air inlet duct to the bracket on the inner fender as shown.

**NOTE: The bolt may be accessible from underneath the vehicle. Then remove the secondary bolt that secures the bracket and remove the bracket.**



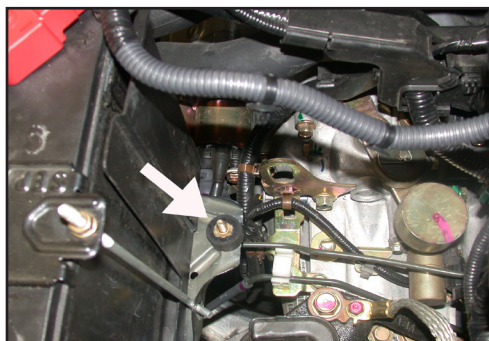
17. From underneath the vehicle remove the resonator inlet duct, which is secured by a bolt to the resonator.



18. Remove the two bolts that secure the resonator to the inner fender, then, remove the resonator as shown.



19. Install the silicone hose and hose clamps onto the throttle body and tighten as shown.

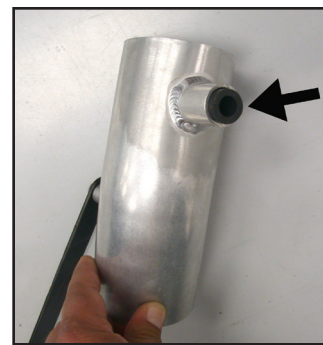


20. Install the provided rubber mounted stud into the original air cleaner mounting hole on the battery tray as shown.



21. Using the provided hardware secure the provided bracket onto the K&N short ram tube as shown.

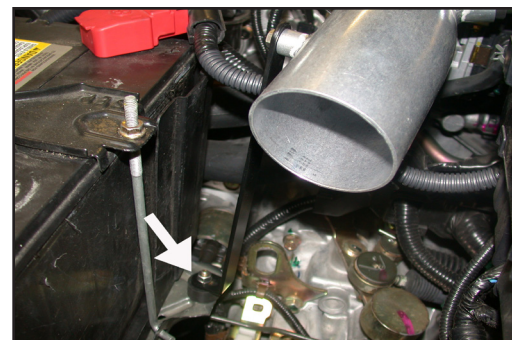
**NOTE: Before installing the bracket, inspect the inside of the tube for any debris, then clean the inside out with water and a towel. Inspect the tube one more time before proceeding to the next step.**



22. Install the silicone hose into the vent on the K&N short ram intake tube as shown.



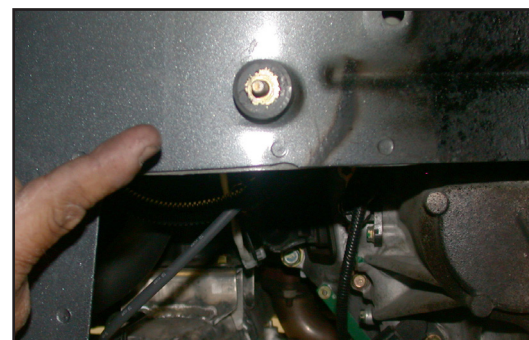
23. Slide the K&N short ram intake tube into the silicone hose on the throttle body, then, slide the crankcase vent hard line into the vent on the intake tube as shown, but do not tighten at this time.



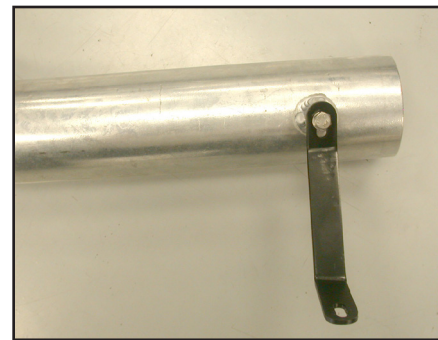
24. Secure the bracket to the rubber mounted stud and secure it with the provided hardware as shown but do not tighten at this time.



25. Slide the silicone hump hose onto the K&N short ram intake tube as shown, but do not tighten at this time.

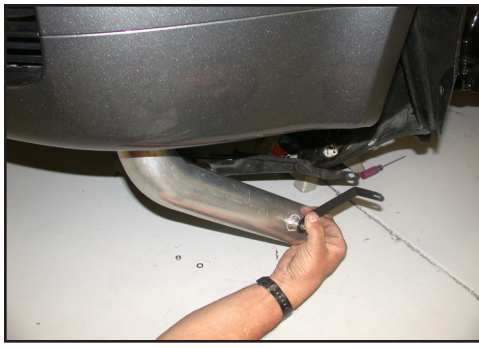


26. Install the provided rubber mounted stud into the original resonator mounting hole as shown.



27. Install the provided bracket onto the threaded boss on the K&N cold air intake tube and secure with the provided hardware as shown.

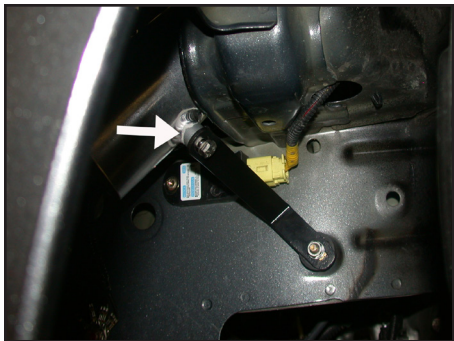
**NOTE: Before installing the bracket, inspect the inside of the tube for any debris, then clean the inside out with water and a towel. Inspect the tube one more time before proceeding to the next step.**



28. From underneath the vehicle slide the K&N® cold air intake tube through the hole in the inner fender as shown.



29. Slide the K&N® cold air intake tube into the silicone hump hose as shown, then tighten the hose clamps.



30. Line up the bracket with the rubber mounted stud in the inner fender, then, secure it using the provided hardware as shown.



31. Install the K&N® Drycharger® onto the K&N® air filter as shown.

**NOTE: Please be aware the Drycharger® is water repellent, not water proof. Depending on conditions and usage the water repellent treatment is good for 1 to 2 years. See the parts list to reorder a new Drycharger® if necessary.**



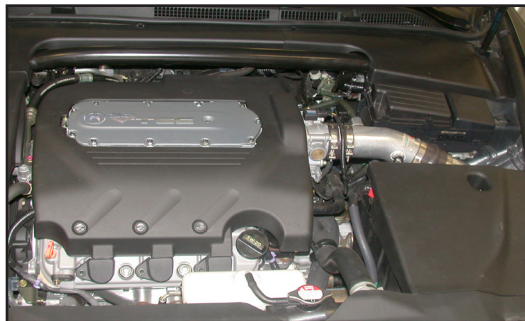
32. Install the K&N® air filter from underneath the vehicle and secure it with the provided hose clamp as shown.

33. Reverse the removal process and reinstall the inner wheel valance and the spoiler flap using the stock hardware.

34. Reinstall the wheel and torque to factory specs.



35. Reconnect the negative battery cable and double check to make sure everything is tightened and properly positioned before starting the vehicle. Reinstall the battery cover as shown.



36. This K&N® high flow intake system has been designed to be used in two different configurations. In the case of inclement weather, the cold air tube can be removed and the air filter can be clamped onto the intake tube located in the engine compartment to avoid the possibility of ingesting water into the engine.

**NOTE: When using short ram intake, the battery cover will not be re-installed.**

**NOTE: If you have any concerns, return the vehicle to stock using the factory equipment.**

37. The C.A.R.B. exemption sticker, (attached), must be visible under the hood, so the emissions inspector can see it when the vehicle is required to be tested for emissions. California requires testing every two years, other states may vary.

38. It will be necessary for all K&N® high flow intake systems to be checked periodically for realignment, clearance and tightening of all connections. Failure to follow the above instructions or proper maintenance may void warranty.

#### ROAD TESTING:

1. Start the engine with the transmission in neutral or park, and the parking brake engaged. Listen for air leaks or odd noises. For air leaks secure hoses and connections. For odd noises, find cause and repair before proceeding. This kit will function identically to the factory system except for being louder and much more responsive.

2. Test drive the vehicle. Listen for odd noises or rattles and fix as necessary.

3. If road test is fine, you can now enjoy the added power and performance from your kit.

4. K&N Engineering, Inc., suggests checking the air filter element periodically for excessive dirt build-up. When the element becomes covered in dirt (or once a year), service it according to the instructions on the Recharger® service kit, part number 99-5050 or 99-5000

**INTAKE SYSTEMS FOR VEHICLES LISTED ARE 50 STATE LEGAL. SEE KNFILTERS.COM FOR CARB STATUS ON EACH PART FOR A SPECIFIC VEHICLE.**